

CONNECTED SOLUTIONS

— delivering smarter fleet operations —



 **CONNECTED SOLUTIONS**

Turning data into practical intelligence

Connected Solutions is a suite of Thermo King technology **designed to deliver information** that matters to you.

Putting this data to work gives you the ability to track & trace individual deliveries across your fleet. You'll be able to demonstrate temperature levels, meet regulatory requirements, and respond instantly to new challenges.

Connect and **see**
the **condition of your**
assets at any time

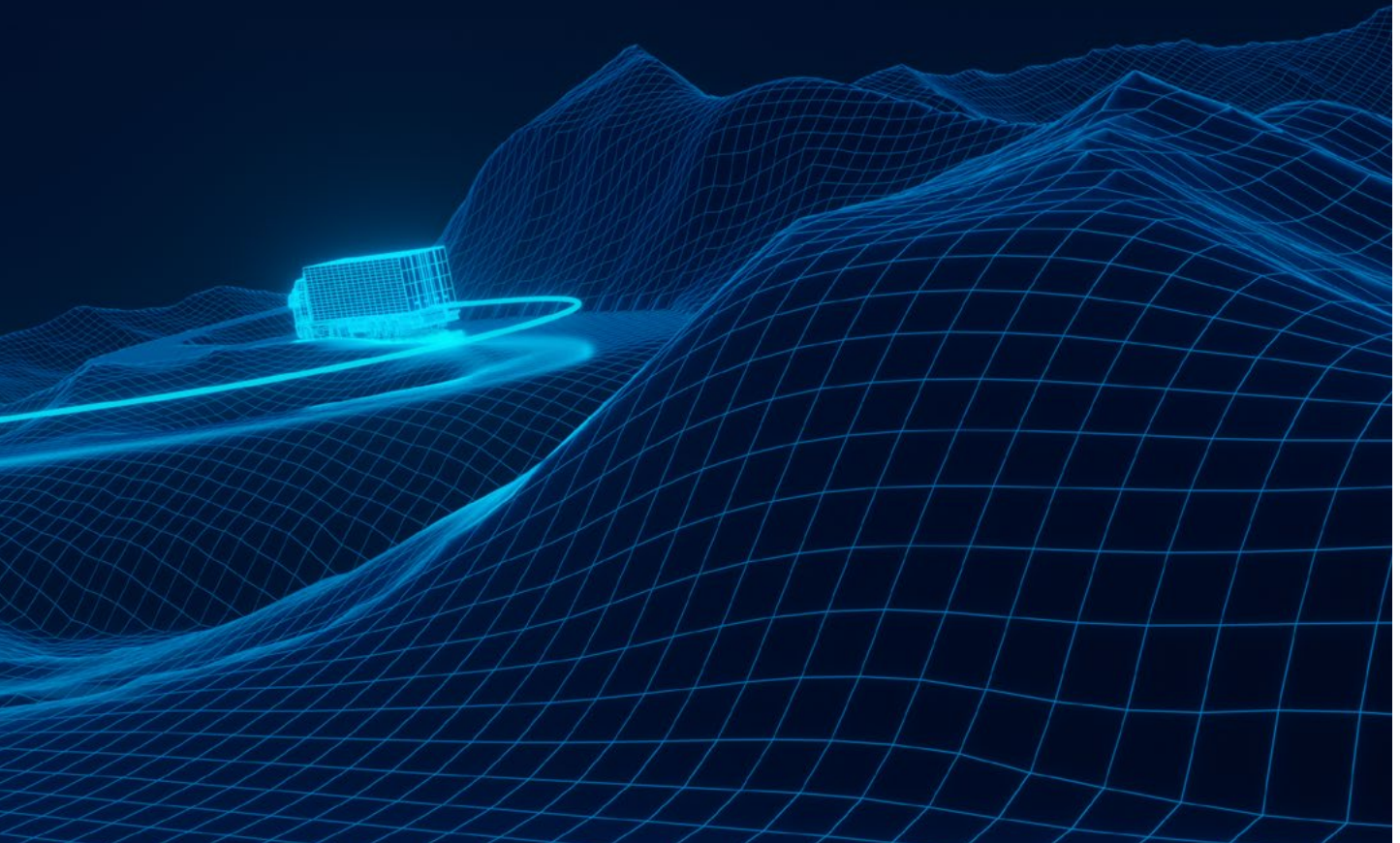
Connect and **know**
you're **compliant and**
managing risk appropriately

Connect and **grow**
by **raising critical uptime**
and **asset utilization**



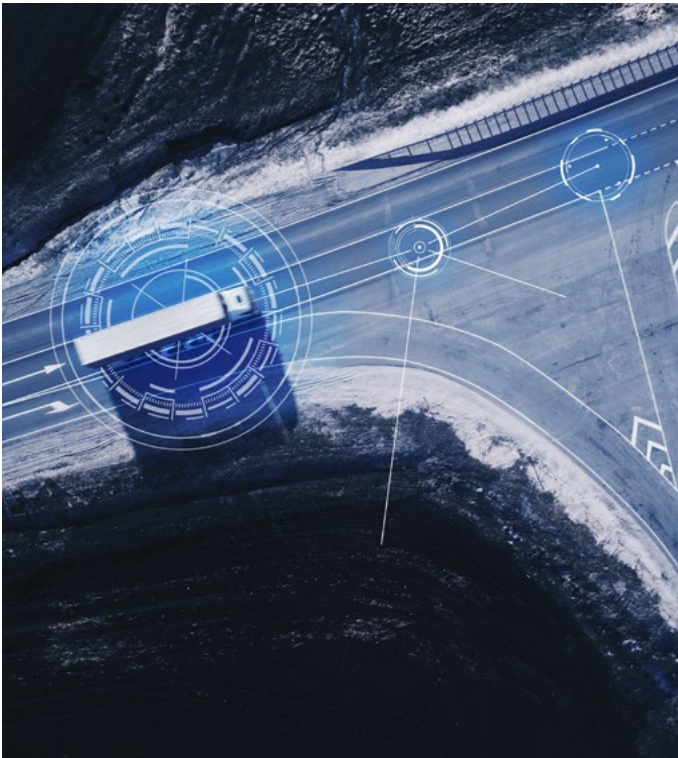


CONNECTED SOLUTIONS



The 3 advantages of data-driven fleet operations

The internet has fundamentally changed customer expectations. As a result, instant information has become the norm. The only way to deliver what your customers want is by fully embracing data-driven fleet operations. And that process starts with Connected Solutions.



See.

With real-time visibility into the whereabouts and status of every asset out on the road.

REEFER STATUS

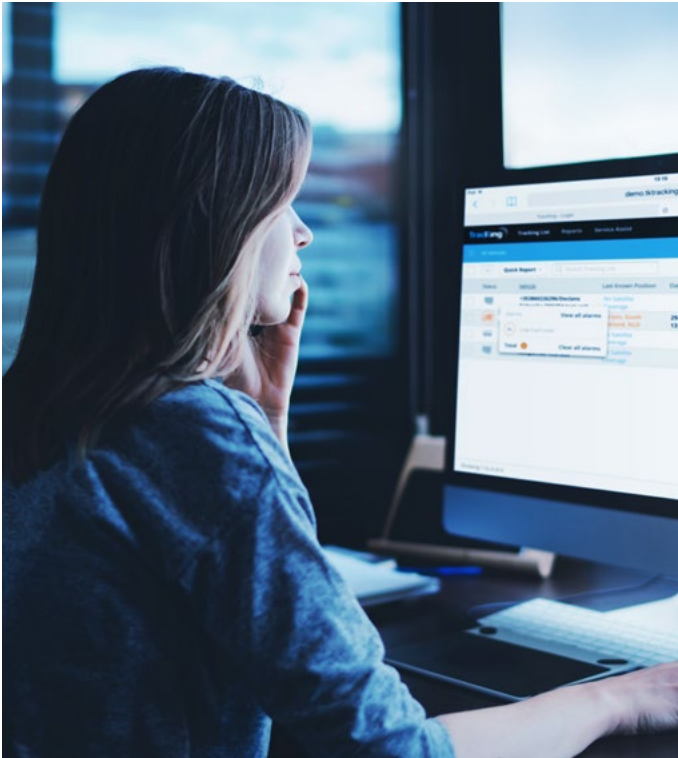
Is your unit on? What's the temperature set-point? As any Fleet Manager knows, problems can emerge from even the most basic of reefer operations.

LOAD CONDITION

Keep an eye of the real temperature of individual loads in transit, rather than relying on the temperature set-point – to guarantee quality of delivery.

ASSET LOCATION

Monitor the current location of your assets at any time to ensure a quick and effective response to any emerging issue.



Know.

Rely on effortless compliance and increased security, wherever your fleet is headed.

TEMPERATURE COMPLIANCE

Use temperature reports and graphs to prove sensitive cargo was maintained at the desired temperature throughout every point in the journey.

ASSET SECURITY

With door sensor data available on the Tracking platform, you can record all door openings to keep an eye on temperature and load security.

CARGO TRACEABILITY

Track shipment location and condition to know instantly when a delay occurs, and to proactively manage exceptions.

Grow.

Contribute to your business success with increased utilization and lower costs.

VEHICLE UPTIME

Keep vehicles operational and earning for longer by combining usage data with proactive maintenance schedules.

FUEL USAGE

Maintain visibility into the way drivers set reefer modes to ensure the most fuel-efficient mode is consistently used when running frozen loads.

INTELLIGENT PLANNING

Optimize fleet performance by ensuring the right vehicle in the right condition is used for the right load – and delivered via the right routes.

Optimizing vehicle uptime

Every time a vehicle is off the road it's costing you money. Equally frustrating is the fact that the data is there to give you advance warning of any upcoming problem.

With Connected Solutions and its fleet management tracking system, **this information is available in real-time on Thermo King Tracking platform.** That means you can spot any potential issue before it develops.

Better still, by monitoring usage and performance, you'll know the ideal time to bring in vehicles for servicing, thus boosting uptime and increasing the life expectancy of your equipment.

**PREDICTIVE
MAINTENANCE**



**FLAWLESS
SERVICE
PLANNING**



**LONGER
EQUIPMENT
LIFE**





 **AGILE ROUTE
PLANNING**

 **DISCOURAGE
FUEL THEFT**

 **FASTER
RESPONSE
TIME**

Optimizing fleet performance

Data can be put to work in many different ways. Think alternate route planning in reaction to traffic congestion, implementing more effective driver training, and detecting instances of fuel loss.

But equally Connected Solutions is about **helping you become more responsive.** To know immediately when a problem occurs, and to gain the visibility needed to initiate an effective response – enabling your wider fleet to keep running while a repair is completed.

GET WISE TO CONNECTED SOLUTIONS

**Visit our dedicated webpage to check up
on the latest updates & expansions.**

Tips and tricks to get the most out of Connected Solutions



Up to 80% fuel savings

For set points lower than -4.5°C , fleets can run in Cycle-Sentry to save fuel, increase engine off hours and extend reefer life.



Extended to your trailers

Trailer Assist – one of the newest additions to Connected Solutions – collects and presents a range of insights relating to a trailer's operational condition.



Speed up your response time

Monitoring if a reefer unit is down with shutdown alarms, and tracking where the closest back-up trailer is located, can help significantly improve on-time delivery.



Lean fleet management

Monitoring reefer hours is the quickest way to identify both over-utilized and under-utilized reefers, thereby letting you 'right-size' your operation.



Preparation is key

To improve asset uptime the easiest thing to do is ensure all reefers are alarm free and fueled before starting a trip.



Instant notifications

Thanks to the TK Notify app, you can decide which events and alarms trigger a notification – complete with current trailer and cargo information.



Available to all

The TK BlueBox is factory fitted in all Thermo King SLXi and A-Series units and available as an option (factory fitted or aftermarket) for truck units.



Cover all your bases

Using temperature reports and graphs, you can prove the trailer was pre-cooled at the time of loading to the desired temperature.

Round up a wide range of applications

There are plenty of dedicated Connected Solutions-modules that you can integrate and activate seamlessly – each with their own set of benefits.

As technology keeps changing, our offering of available modules does too.

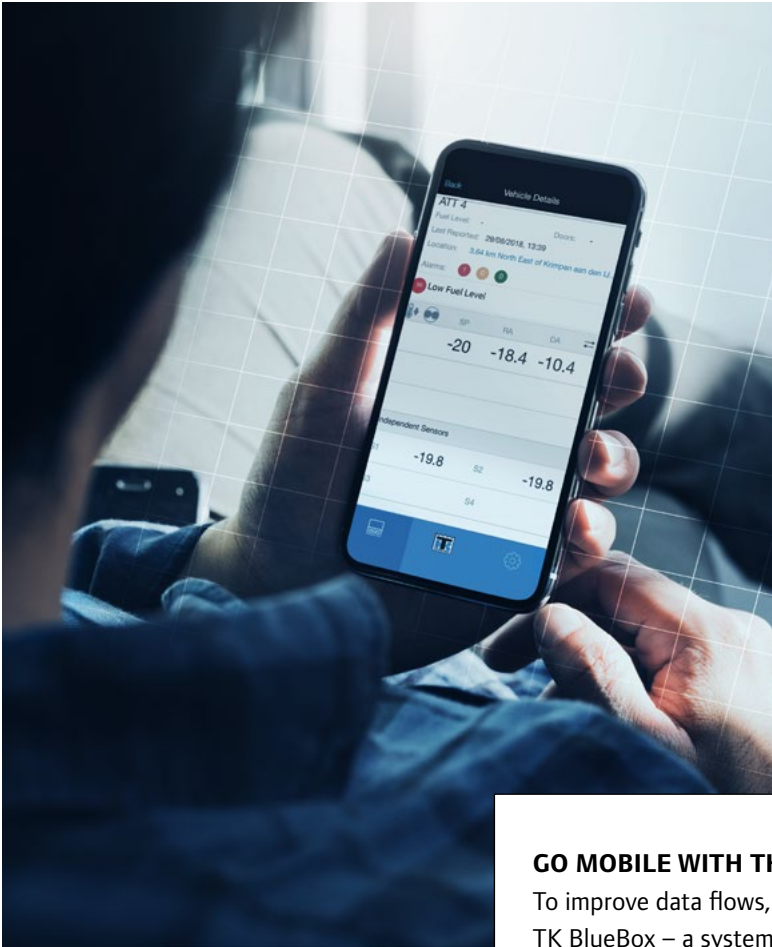
Consult the up-to-date list of available Connected Solutions-modules at europe.thermoking.com/telematics



**DATA IS
EVERYWHERE**

Stay on track with Tracking

TrackiNG is a GPRS/GPS temperature and asset management system that gives you end-to-end visibility on different platforms. This technology delivers real-time and historical temperature data alongside fleet information – all to help you increase fleet efficiency and reduce the potential for cargo loss.



Key benefits

CARGO PROTECTION

Maintain high cargo safety standards and ensure on-time delivery

ASSET UPTIME

Eliminate unscheduled breakdowns and improve maintenance

FUEL MANAGEMENT

Save on annual fuel costs with real-time unit usage and cargo visibility

ASSET SECURITY

Be assured that your unit is safe and being used properly

GO MOBILE WITH THE TK REEFER APP

To improve data flows, Thermo King invented the TK BlueBox – a system that comes standard on every SLXi trailer and A-Series unit and as option on SP and VP range. It offers you the power of raw data, and all you need to access that data is **download the free TK Reefer App.**

CONTACT YOUR NEAREST
CONNECTED SOLUTIONS DEALER

The Thermo King dealer network boasts over 500 authorized service points in 75 countries that are open and available 24/7.





THERMO KING

Thermo King – by Trane Technologies (NYSE: TT), a global climate innovator – is a worldwide leader in sustainable transport temperature control solutions. Thermo King has been providing transport temperature control solutions for a variety of applications, including trailers, truck bodies, buses, air, shipboard containers and railway cars since 1938.

For further information
europe.thermoking.com

Find your nearest dealer on
dealers.thermoking.com

TRANE
TECHNOLOGIES